



**ROCKWELL** 



ROCKWELL  
SPECIALLY  
DEVELOPED TO  
SATISFY  
ARTISTS' DREAMS.

## **ROCKWELL, Where Creativity Meets Compassion and Consciousness.**

At Rockwell Art Supplies, we are proud to present our exceptional line of paint products crafted to elevate both your artistic endeavors and your ethical values. Our paints are meticulously created using the finest natural pigments, allowing you to indulge in your artistic passion while staying true to your commitment to veganism, animal welfare, and environmental consciousness.

**Vegan Excellence:** We understand the importance of aligning your artistic choices with your compassionate lifestyle. That's why our Rockwell Art Supplies paint products are 100% vegan, devoid of any animal-derived ingredients. Now you can express your creativity knowing that every brushstroke reflects your dedication to a cruelty-free world.

**Animal-Friendly Philosophy:** Our commitment to animal welfare goes beyond just the absence of animal ingredients. We take pride in our products being entirely animal-friendly and cruelty-free. Rockwell Art Supplies holds a strict no animal testing policy, ensuring that your artistic journey remains untainted by harm. By choosing Rockwell Art Supplies, you're supporting a brand that believes in respecting all forms of life, allowing you to create art with a clear conscience.

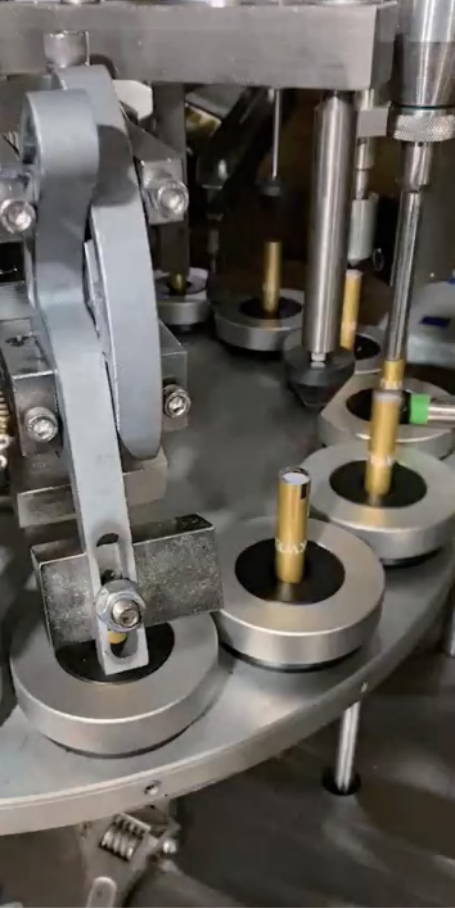
**Environmentally Conscious Creation:** Art and nature are intrinsically connected, and we're dedicated to preserving that bond. Our paint products are crafted with a deep understanding of their impact on the environment. From responsible sourcing of natural pigments to eco-conscious packaging, we're taking steps to minimize our ecological footprint and ensure that your artistry doesn't come at the planet's expense.

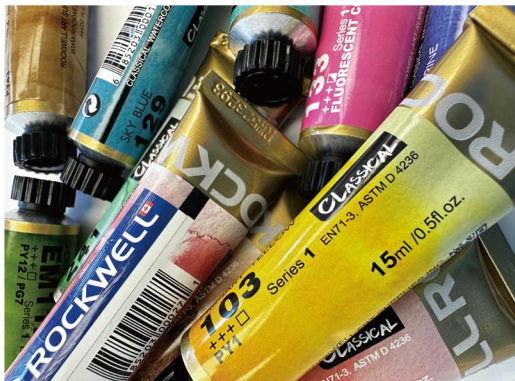
**Unleash Your Creativity, Unchain Your Values:** Rockwell Art Supplies stands as a testament to the harmonious coexistence of artistry, compassion, and consciousness. With our vegan, animal-friendly, and environmentally conscious paint products, you're not only elevating your creative expression but also contributing to a world that embraces kindness and sustainability.

Join us in celebrating the beauty of art and the beauty of our planet. Choose Rockwell Art Supplies – where your masterpiece is a brushstroke towards a better world.



RockWell





## CLASSICAL

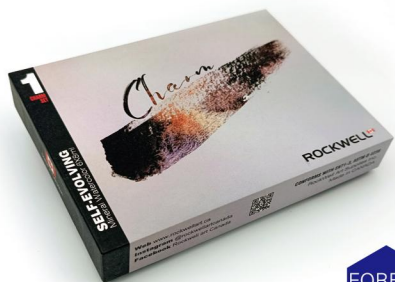
Watercolors  
52 Colors  
15ml



*MAGIC*

## MAGIC

Self-Evolving  
Mineral  
Watercolors  
Set of 6 ColorTubes  
8ml



FOREST  
THEME



WET-  
LAND  
THEME



*Charm*

## CHARM

Self-Evolving  
Mineral  
Watercolors  
24 colors  
6 colors Set  
8ml





## MASTER'S SECRETS JAVID TABATABAEI

Carefully selected  
watercolor  
Set of 12 Color Tubes  
15ml



## MASTER'S SECRETS MARCOS BECCARI

Carefully selected  
watercolor  
Set of 12 Color Tubes  
15ml



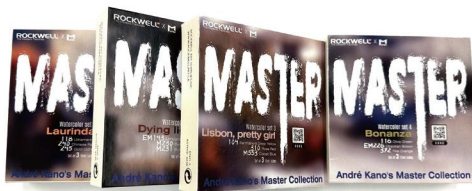
## MASTER'S SECRETS VENETA DOCHEVA

Carefully selected  
watercolor  
Set of 12 Color Tubes  
15ml



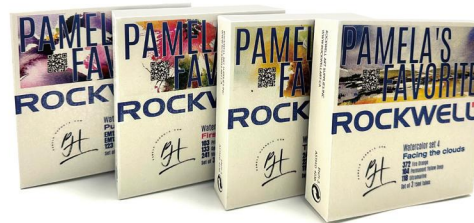
## MASTER'S SECRETS JIANGLONG PAN

Carefully selected  
watercolor  
Set of 12 Color Tubes  
15ml



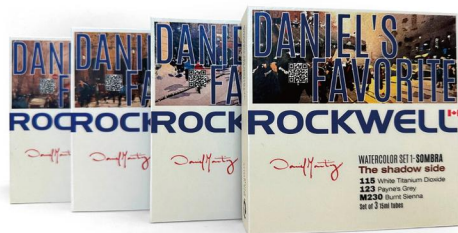
MASTER'S SECRETS  
**ANDRE  
KANO**

Carefully selected watercolor  
4 boxes of 12 colors in total  
15ml



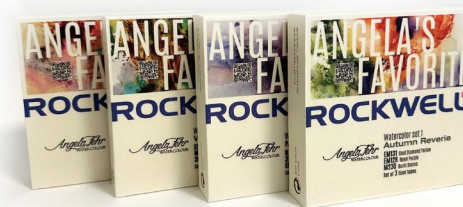
ARTIST'S FAVORITES  
**PAMELA  
HARNOIS**

Carefully selected watercolor  
4 boxes of 12 colors in total  
15ml



ARTIST'S FAVORITES  
**DANIEL  
MARTÍNEZ**

Carefully selected watercolor  
4 boxes of 12 colors in total  
15ml



ARTIST'S FAVORITES  
**ANGELA  
FEHR**

Carefully selected watercolor  
4 boxes of 12 colors in total  
15ml



All RockWell, Natural Mineral Pigments are produced & developed by combining new technologies with the handmade ways used by Ancient Greeks, Egyptian & Chinese artists, to have unique, vibrant & everlasting pigments.

**CAOJUN**

- Winner of Louisa Gold Award (2017)
- Multi-disciplinary award winning artist
- Member of the Fairway Fine Art Academy of Arts
- Graduate of the Fairway Fine Art Academy of Arts
- Winner of International Awards
- His paintings are always in Art Exhibitions whether online or printed, among which is the Catalogue of International Watercolor Society.
- Master Endre is well known for his style in creating animal paintings.
- His new theme will include clues of the Chinese Culture which he adores and enjoys much.

RockWell Art Supplies Inc. - Canada is proud to appoint Master Endre Penovac as International Pigment Testing Expert.

Create tradition today



## MASTER G12-801 CAOJUN LAPIS LAZULI

Treasure grade Watercolor  
Tube in a fancy box  
8ml



All RockWell, Natural Mineral Pigments are produced & developed by combining new technologies with the handmade ways used by Ancient Greeks, Egyptian & Chinese artists, to have unique, vibrant & everlasting pigments.

**Cindy Lane**

An Artist at Large  
Multi-disciplinary award winning artist across many media.  
Paintings held in Government, corporate and private collections throughout the world.  
Work is licensed by institutions and companies worldwide.  
Engaged by Government and Educational Institutions to teach unique techniques.  
Social media following of 275k who look to Cindy for art inspiration and advice.  
RockWell Art Supplies Inc. - Canada is proud to appoint Master Cindy Lane as International Pigment Testing Expert.



## MASTER G12 -800 CINDY OCEAN GREEN MALACHITE

Treasure grade Watercolor  
Tube in a fancy box  
8ml



All RockWell, Natural Mineral Pigments are produced & developed by combining new technologies with the handmade ways used by Ancient Greeks, Egyptian & Chinese artists, to have unique, vibrant & everlasting pigments.

**Endre Penovac**

A Serbian Watercolor artist.  
Member of Europa Global Art Jury.  
A graduate of the Fairway Fine Art Academy of Arts.  
Winner of International Awards.  
His paintings are always in Art Exhibitions whether online or printed, among which is the Catalogue of International Watercolor Society.

Master Endre is well known for his style in creating animal paintings.  
His new theme will include clues of the Chinese Culture which he adores and enjoys much.

RockWell Art Supplies Inc. - Canada is proud to appoint Master Endre Penovac as International Pigment Testing Expert.



## MASTER G12-802 ENDRE TOURMALINE

Treasure grade Watercolor  
Tube in a fancy box  
8ml



All RockWell, Natural Mineral Pigments are produced & developed by combining new technologies with the handmade ways used by Ancient Greeks, Egyptian & Chinese artists, to have unique, vibrant & everlasting pigments.

**CUI JINGZHE**

Classics Spread Forever

Born in 1980, he is the Executive Director of Chinese Artists Association.  
His art works were exhibited internationally.  
2015: The China Red and the Turq Lapis, were in both, the European Art Salon and the Great Grand Palace Park.  
2016: The China Red Series were in the Royal Watercolor International Exhibition in and with the Royal Academy.  
2017: The works were at the Monaco International Art Exhibition.  
2018:  
The China Red Series were collected by the International Olympic Museum and the Museum of IOC, witnessed the Collection of Royal Watercolor Society, the Royal Watercolor Society of London and the Royal Watercolor Society of the Royal Public International League of Paris, World Art Forum.  
He has also been named the Jury Prize in Cannes International Art Exhibition.



## MASTER G12-808 CHINA RED MIRROR CINNABAR

Treasure grade Watercolor  
Tube in a fancy box  
8ml



## BLUEBERRY

Fruit series  
Watercolor  
Set of 3 Color Tubes  
8ml



## AROMA COFFEE

Mellow series Watercolor  
Set of 3 Color Tubes  
8ml



## NATIONAL BEAUTY

Mineral Watercolor  
Set of 6 Color Tubes  
8ml



## OILAC

### 3D OILAC

Mineral  
Water base mixable  
oil color  
Set of 12 Color Tubes  
40ml





## CLASSICAL

Watercolors  
52 Colors  
15ml



Yellow Lemon

102  LF6/+++  
PY.3



Jaune Brillant

YJB15  LF6/+++  
PY.35/ PO.20/ PW.6



Cadmium Yellow Orange

OCY33  LF6/+++  
PO.20



Primary Yellow

103  LF7/+++  
PY.1



Permanent Deep Yellow

104  LF7/+++  
PY.65



Transparent Orange

OTO21  LF7/+++  
PO.71



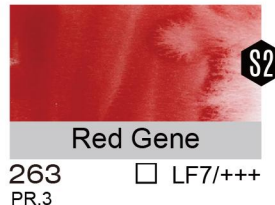
Fire Orange

372  LF8/+++  
PO.73



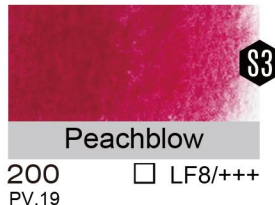
Chinese Red

240  LF7/+++  
PR.4



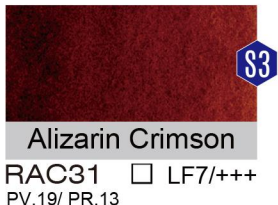
Red Gene

263  LF7/+++  
PR.3



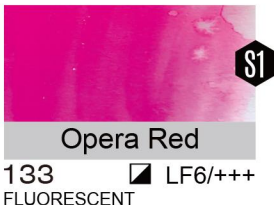
Peachblow

200  LF8/+++  
PV.19



Alizarin Crimson

RAC31  LF7/+++  
PV.19/ PR.13



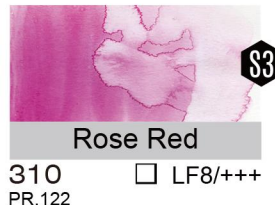
Opera Red

133  LF6/+++  
FLUORESCENT



Cochineal Red

M509  LF7/+++  
COCHINEAL DRY POWDER



Rose Red

310  LF8/+++  
PR.122



Mineral Violet

M229  LF8/+++  
CHINA PURPLE MINE



Lavender

PLV11  LF8/+++  
PV.15/ PB.29/ PW.6



Violet Blue

PVB22  LF8/+++  
PV.15



Midnight Purple

380  LF8/+++  
PV.27



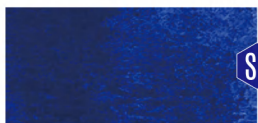
Lavender Deep

208  LF8/+++  
PV.23



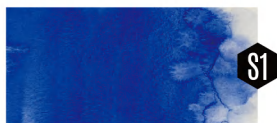
Lake Source Blue

M460  LF6/+++  
PB.10



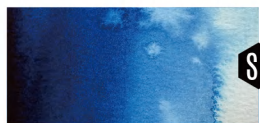
S3

Ultramarine Blue Deep

BLD37  LF6/+++  
PB.60

S1

Ultramarine

118  LF8/+++  
PB.29

S2

Phthalocyanine Blue

219  LF8/+++  
PB.15

S5

Cobalt Blue

M553  LF8/+++  
PB.28

S1

Royal Blue

BLR19  LF7/+++  
PB15:6/ PW.6/ PB.29

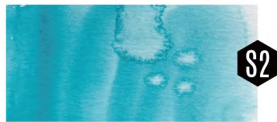
S1

Prussian Blue

M144  LF7/+++  
PB.27

S1

Sky Blue

129  LF6/+++  
PB.17

S2

Dark Cyan

M228  LF6/+++  
PB.17/ PG.7

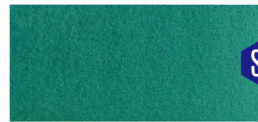
S5

Cobalt Turquoise

M554  LF8/+++  
PB.36

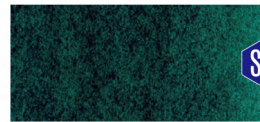
S1

Light Turquoise

M149  LF5/+++  
PB.15/ PG.7/ PW.6

S1

Ultramarine Turquoise

GLU14  LF8/+++  
PG.7/ PB.29

S2

Perylene Green

GPG30  LF7/+++  
PBK.31

S2

Turquoise

209  LF8/+++  
PG.7/ PW.6

S2

Viridian Hue

241  LF6/+++  
PG.7

S2

Spring Green

227  LF7/+++  
PG.7

S1

Olive Green

116  LF7/+++  
PG.7/ PY.14/ PY.12

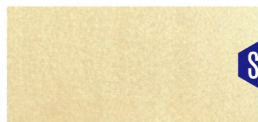
S1

Opera Sap Green

137  LF7/+++  
FLUORESCENT

S1

Green Lemon

136  LF7/+++  
FLUORESCENT

S1

Buff Titanium

YBT16  LF6/+++  
PW.6:1

S2

Gold Ochre

245  LF8/+++  
PY.43

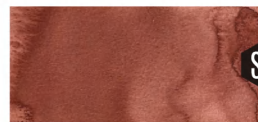
S1

Raw Sienna

BRS13  LF7/+++  
PBR.7/ PY.42

S2

Burnt Sienna

M230  LF8/+++  
PR.101

S1

Natural Ochre

121  LF7/+++  
PR.101/ PBR.6

S2

Burnt Umber

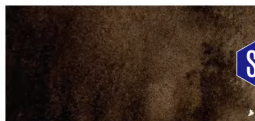
M231  LF8/+++  
PY.1/ PR101/ PBR6



S1

Mars Brown

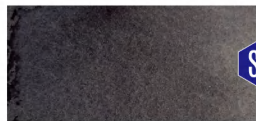
M122  LF8/+++  
PBR.6



S1

Sepia

BRS15  LF8/+++  
PBR.7/ PBK.6



S1

Neutral Tint

BKN12  LF7/+++  
PBK.6/ PB.15/ PV.19



S1

Ivory Black

124  LF8/+++  
PBK.7



S1

Payne's Grey

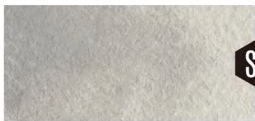
123  LF8/+++  
PBK.7/ PB.15



S1

Grey of Grey

GRG17  LF7/+++  
PBK.6/ PW.6



S1

Light Grey

203  LF8/+++  
PBK.7/ PW.6



S1

White Titanium Dioxide

115  LF7/+++  
PW.6

COLOUR NUMBER	OPACITY DEGREE	LIGHTFASTNESS	SERIES
102	<input checked="" type="checkbox"/> Opaque <input checked="" type="checkbox"/> Semi-opaque <input type="checkbox"/> Trasparente	+++ Excellent ++ Very Good + Normal LF= Level of Lightfastness	<input checked="" type="checkbox"/> Price Series 1-5



# SELF-EVOLVING

Self-Evolving Mineral Watercolors  
39 Colors

Available In :  
15ml, 15 tubes;  
8ml, 24 tubes.

Introducing our  
Self-Evolving  
Mineral Pigments,  
The first of their kind  
in the world of  
watercolor art.

Light resistance,  
transparency,  
tinting strength,  
color value,  
particle size,  
NON-toxicity, etc.  
and comply with  
EN71-3, ASTM  
and D4236  
international  
standards.

Dive into the enchanting realm of our charming self-evolving mineral watercolors, where each hue holds a captivating story, a glimpse into the world of mythical creatures, and an invitation to explore ethereal dreams and storytelling.

## COLOUR NUMBER

EM407

## OPACITY DEGREE

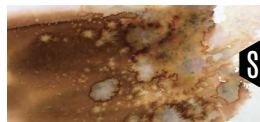
- Opaque
- Semi-opaque
- Transparente

## LIGHTFASTNESS

- +++ Excellent
- ++ Very Good
- + Normal
- LF= Level of Lightfastness

## SERIES

**S1** Price Series  
1-4



Magic Wizard

EM407  LF4/+++  
Plant color PB.29/ PR.3



Permanent Yellow Green

EM112  LF6/+++  
PY.12/ PG.7



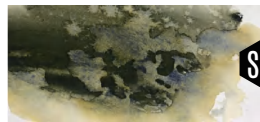
Alexandria Diamond Purple

EM119  LF7/+++  
PB.29/ PR.122/ PB.R6



Morai Witch

EM414  LF7/+++  
Tourmaline PR.146



Opal Yellow

EM233  LF7/+++  
PB.29/ PY.65/ PBR.6



Cleopatra Green

EM225  LF7/+++  
PB.17/ MINERAL



Valentine Purple

EM146  LF5/+++  
PW.6/ PR.122/ PB.29



Lapis Brown

EM232  LF7/+++  
PB.29/ PY.65/ PO.13



Limugreen Brown

EM143  LF7/+++  
PB.29/ PY.43



Sea Blue Black

EM204  LF8/+++  
PBK.7/ PB.15



Amethyst

EM210  LF8/+++  
PR.122/ PB.29



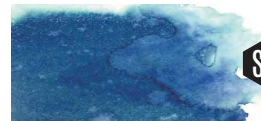
Obsidian Brown

EM226  LF7/+++  
PB.29/ PBR.6/ PY.43



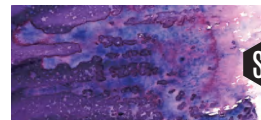
Onat Diamond Yellow

EM131  LF7/+++  
PB.29/ PY.65



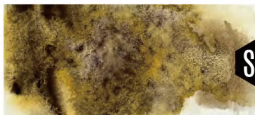
Palaiba Diamond Blue

EM120  LF7/+++  
PB.29/ PG.7



Royal Purple

EM128  LF7/+++  
PB.17/ PG.7



S2

Salt-marsh Sparrow

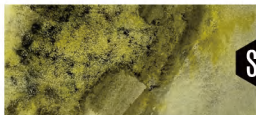
EM721  LF7/+++  
PBR.29/ PY.3



S5

Fall Story

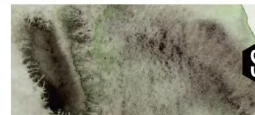
EM711  LF7/++  
PG.50/ PY.3/ PO.13



S1

Yellow Moss

EM714  LF7/+++  
PBK.11/ PY.1



S2

Wetlands

EM719  LF7/+++  
PBR.29/ PG.7



S2

Swamp

EM715  LF7/+++  
PBR.29/ PB.17



S2

Iridescent Mallard

EM718  LF7/+++  
PBK.11/ PG.7



S2

Dragonfly

EM722  LF7/+++  
PBR.29/ PB.29/ PG.7



S5

Tree Sprite

EM704  LF8/+++  
PB.36/ PG.50/ PV.19



S5

Poseidon

EM709  LF8/+++  
PG.50/ PB.36/ PB.15



S4

Angel Eyes

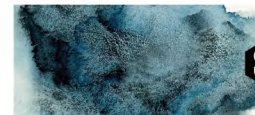
EM706  LF6/+++  
PG.7 Mica / Glist



S4

Deep Soul

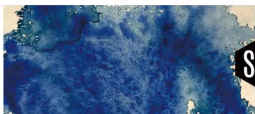
EM705  LF8/+++  
PB.15/ RED ONYX



S2

Cerulean Warbler

EM724  LF7/+++  
PBK.11/ PB.15



S3

Blue Enchantress

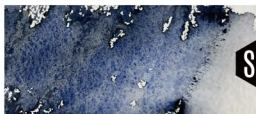
EM710  LF8/+++  
PB.29/ PB.27



S5

Wild Iris

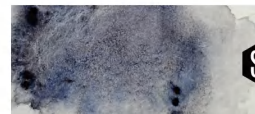
EM717  LF8/+++  
PV.23/ PV.19/ PB.36



S2

Cosmic Sound

EM702  LF8/+++  
PBK.7/ PB.29



S2

Peat Bogs

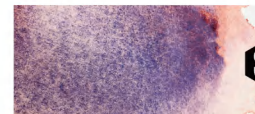
EM720  LF7/+++  
PBR.29/ PB.29



S4

Lover Tears

EM712  LF6/++  
PV.19 Mica/ Glist



S4

Peach Fairy

EM707  LF8/+++  
PV.15/ PB.29/ PV.19



S3

Purple Lichen

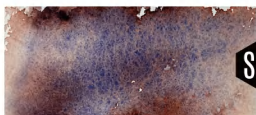
EM723  LF7/+++  
PBR.29/ PB.15



S5

God's Back

EM703  LF7/+++  
PB.36/ PV.19/ PY.3



S4

Elf Wings

EM701  LF8/+++  
PB.29/ PR.3/ PV.15



S2

Maple Samaras

EM716  LF8/+++  
PV.15/ PY.3/ PO73



S4

Landmark

EM708  LF7/+++  
PBK.7 Ruby Deep



S2

Cattails

EM713  LF7/+++  
PBR.29/ PBK.11/ PY.42/ PB.29

# MAGIC

Self-Evolving  
Mineral  
Watercolors

12 colors  
15ml set



*RockWell takes pride in being at the forefront of innovation, and this exclusive set of 12 embodies the extraordinary magic of witnessing colors unfold on your paper as you paint. This collection embodies 12 enchanting self-evolving mineral watercolors. Each tube holds a captivating story, a glimpse into the world of witches and wizard, diamonds and opals, and every adventure under the sun.*

*This collection goes beyond mere pigments; it embodies narratives that unfold with every stroke, allowing your artistic journey to transcend the ordinary. Let your creations be a canvas for the extraordinary tales woven within each captivating shade.*



# MAGIC

INTRODUCING OUR SELF-EVOLVING MINERAL PIGMENTS  
THE FIRST OF THEIR KIND IN THE WORLD OF WATERCOLOR ART





# We have stories, We love more.

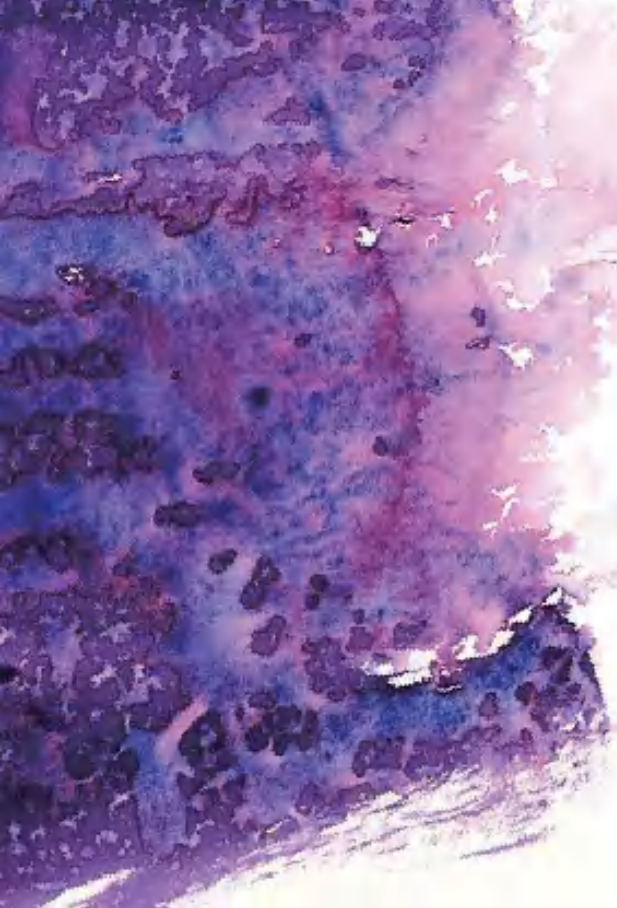
Grandpa told his grandson a beautiful story.

Once upon a time, there was a young and wealthy king named Caesar. Because he loved the noble purple, the entire palace was built with "Royal Purple" gems. There is a most beautiful princess who loved Caesar very much, and finally conquered Caesar with her beauty and wisdom and became a queen. Later, Caesar used the queen's lucky color and asked the best craftsmen to make a precious gem for her, which is the "Cleopatra Green". The two people loved each other very much, so that the whole country is full of the lavender romance of love, and people became "Valentine Purple". They collected a lot of precious diamonds, and they only loved a purple diamond, named "Alexandria Diamond Purple" after their son. One Christmas, the two met to give the moon an "Opal Yellow" gem as a gift to witness love.

However, something terrible happened. The queen's sister "Morai Witch", excessive jealousy prompted her to find a "Magic Wizard". Through magic, the two of them turned the stolen gems into "Onat Diamond Yellow". After many years, the young Alexander grew up and saw his sad mother secretly determined to learn magic every day. After years of hard practice, he finally defeated the witch and magician with "Obsidian Brown" and "Lapis Brown" magic and he regained the gem, because he missed his mother, Alexander turned this hard-won gem into his mother's favorite color of the sea and named it "Paraiba Diamond Blue." The grandson looked at the "Limugreen Brown" gem that grandpa brought, and stroked the gem on his neck and asked grandpa, why do I have this Paraiba blue diamond? Grandpa smiled and said, this is what your father passed on to you in memory of your grandma.

At the end of the story, the old grandfather named Alexander recalled the past in his mind, and cried silently...

Changeable world, unchanging LOVE.



## COLOUR NUMBER

EM407

## OPACITY DEGREE

- Opaque  
 Semi-opaque  
 Trasparente

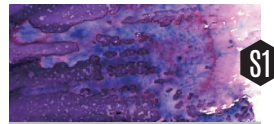
## LIGHTFASTNESS

- +++ Excellent  
++ Very Good  
+ Normal  
LF= Level of  
Lightfastness

## SERIES

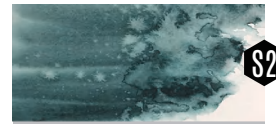
- S1** Price Series  
1-4

*Light resistance,  
transparency, tinting  
strength, color value,  
particle size,  
NON-toxicity, etc.  
and comply  
with EN71-3, ASTM  
and D4236.*



Royal Purple

EM128  LF7/+++  
PB.17/ PG.7



Cleopatra Green

EM225  LF7/+++  
PB.17/ MINERAL



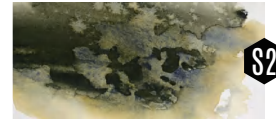
Valentine Purple

EM146  LF5/+++  
PW.6/ PR.122/ PB.29



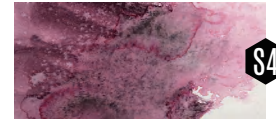
Alexandria Diamond Purple

EM119  LF7/+++  
PB.29/ PR.122/ PB.R6



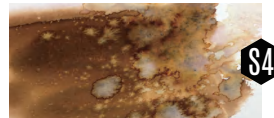
Opal Yellow

EM233  LF7/+++  
PB.29/ PY.65/ PBR.6



Morai Witch

EM414  LF7/+++  
Tourmaline PR.146



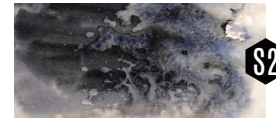
Magic Wizard

EM407  LF4/+++  
Plant color PB.29/ PR.3



Onat Diamond Yellow

EM131  LF7/+++  
PB.29/ PY.65



Obsidian Brown

EM226  LF7/+++  
PB.29/ PBR.6/ PY.43



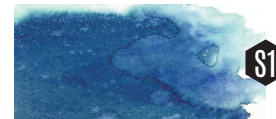
Lapis Brown

EM232  LF7/+++  
PB.29/ PY.65/ PO.13



Limugreen Brown

EM143  LF7/+++  
PB.29/ PY.43



Palaiba Diamond Blue

EM120  LF7/+++  
PB.29/ PG.7





"Change" ! Surprisingly



# CHARM

Self-Evolving  
Mineral  
Watercolors

24 colors  
6 colors Set  
8ml, S1-S5

*Dive into the enchanting realm of our charming self-evolving mineral watercolors, where each hue holds a captivating story, a glimpse into the world of mythical creatures, and an invitation to explore ethereal dreams and storytelling. This collection goes beyond mere pigments; it embodies narratives that unfold with every stroke, allowing your artistic journey to transcend the ordinary. Let your creations be a canvas for the extraordinary tales woven within each captivating shade. Light resistance, transparency, tinting strength, color value, particle size, NON-toxicity, etc. and comply with EN71-3, ASTM and D4236.*



# Charm

INTRODUCING OUR SELF-EVOLVING MINERAL PIGMENTS  
THE FIRST OF THEIR KIND IN THE WORLD OF WATERCOLOR ART



COLOUR NUMBER	OPACITY DEGREE	LIGHTFASTNESS	SERIES
EM721	<input checked="" type="checkbox"/> Opaque <input checked="" type="checkbox"/> Semi-opaque <input type="checkbox"/> Trasparente	+++ Excellent ++ Very Good + Normal LF= Level of Lightfastness	<input checked="" type="checkbox"/> S1 Price Series 1-5



S2

Salt-marsh Sparrow

EM721  LF7/+++  
PBR.29/ PY.3



S5

Fall Story

EM711  LF7/++  
PG.50/ PY.3/ PO.13



S1

Yellow Moss

LF7/+++  
PBK.11/ PY.1



S2

Wetlands

EM719  LF7/+++  
PBR.29/ PG.7



S2

Swamp

EM715  LF7/+++  
PBR.29/ PB.17



S2

Iridescent Mallard

EM718  LF7/+++  
PBK.11/ PG.7



S2

Dragonfly

EM722  LF7/+++  
PBR.29/ PB.29/ PG.7



S5

Tree Sprite

EM704  LF8/+++  
PB.36/ PG.50/ PV.19



S5

Poseidon

EM709  LF8/+++  
PG.50/ PB.36/ PB.15



S4

Angel Eyes

EM706  LF3/+++  
PG.7 Mica / Glist



S4

Deep Soul

EM705  LF8/+++  
PB.15/ RED ONYX



S2

Cerulean Warbler

EM724  LF7/+++  
PBK.11/ PB.15



S3

Blue Enchantress

EM710  LF3/+++  
PB.29/ PB.27



S5

Wild Iris

EM717  LF8/+++  
PV.23/ PV.19/ PB.36



S2

Cosmic Sound

EM702  LF8/+++  
PBK.7/ PB.29



S2

Peat Bogs

EM720  LF7/+++  
PBR.29/ PB.29



S4

Lover Tears

EM712  LF4/++  
PV.19 Mica/ Glist



S4

Peach Fairy

EM707  LF8/+++  
PV.15/ PB.29/ PV.19



S3

Purple Lichen

EM723  LF7/+++  
PBR.29/ PV.15



S5

God's Back

EM703  LF7/+++  
PB.36/ PV.19/ PY.3



S4

Elf Wings

EM701  LF8/+++  
PB.29/ PR.3/ PV.15



S2

Maple Samaras

EM716  LF8/+++  
PV.15/ PY.3/ PO73



S4

Landmark

EM708  LF7/++  
PBK.7 Ruby Deep



S2

Cattails

EM713  LF7/+++  
PBR.29/ PBK.11/ PY.42/ PB.29

# CHARM-1

Self-Evolving  
Mineral  
Watercolors


6 colors Set  
8ml, S1-S5

*Dive into the enchanting realm of our charming self-evolving mineral watercolors, where each hue holds a captivating story, a glimpse into the world of mythical creatures, and an invitation to explore ethereal dreams and storytelling. This collection goes beyond mere pigments; it embodies narratives that unfold with every stroke, allowing your artistic journey to transcend the ordinary. Let your creations be a canvas for the extraordinary tales woven within each captivating shade. Light resistance, transparency, tinting strength, color value, particle size, NON-toxicity, etc. and comply with EN71-3, ASTM and D4236.*

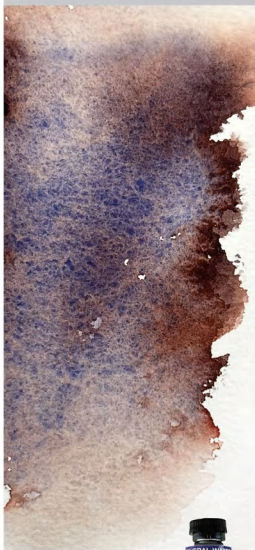


*Charming-1*

INTRODUCING OUR SELF-EVOLVING MINERAL PIGMENTS  
THE FIRST OF THEIR KIND IN THE WORLD OF WATERCOLOR ART

COLOUR NUMBER	OPACITY DEGREE	LIGHTFASTNESS	SERIES
EM701	<input type="checkbox"/> Opaque <input checked="" type="checkbox"/> Semi-opaque <input type="checkbox"/> Trasparente	+++ Excellent ++ Very Good + Normal LF= Level of Lightfastness	 Price Series 1-5

## Elf Wings



EM701

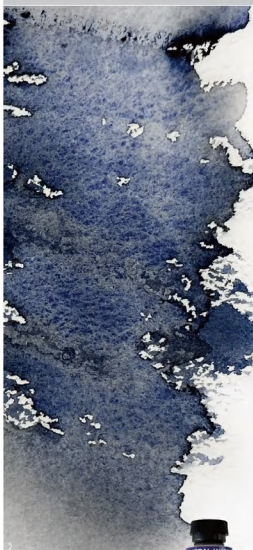
☑ LF8/+++

PB.29/ PR.3/ PV.15

S4



## Cosmic Sound



EM702

☑ LF8/+++

PBK.7/ PB.29

S2



## God's Back



EM703

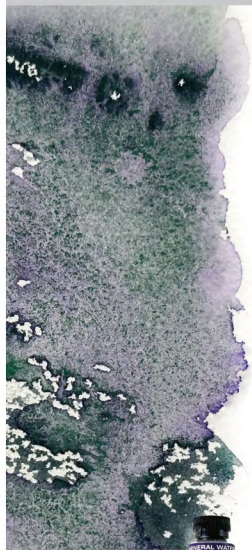
☑ LF7/+++

PB.36/ PV.19/ PY.3

S5



## Tree Sprite



EM704

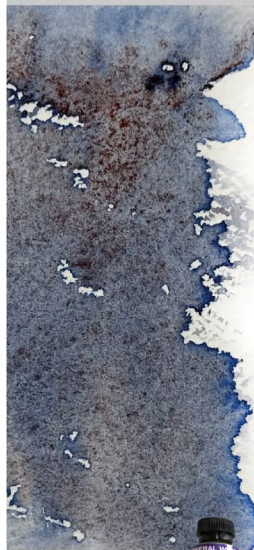
☑ LF8/+++

PB.36/ PG.50/ PV.19

S5



## Deep Soul



EM705

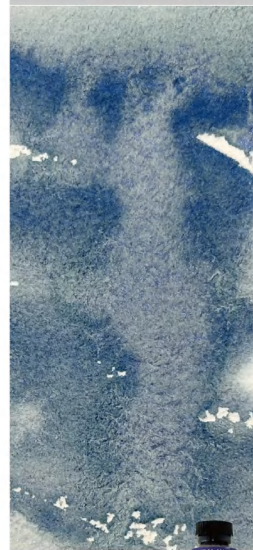
☑ LF8/+++

PB.15/ RED ONYX

S4



## Angel Eyes



EM706

☑ LF3/+++

PG.7 Mica / Glist

S4



# CHARM-2

Self-Evolving  
Mineral  
Watercolors

6 colors Set  
8ml, S1-S5

*Step into the enchanting world of our self-evolving mineral watercolours, where each shade tells a captivating story, unveiling glimpses of mythical creatures and inviting you to explore ethereal dreams and narratives. This collection is more than just a palette of colours; it's a journey of artistic storytelling that transcends the ordinary with every brushstroke. Let your creations become a canvas for the extraordinary tales embedded within each hue. Our watercolours offer exceptional lightfastness, transparency, tinting strength, colour value, and particle size, all while ensuring non-toxicity and compliance with EN71-3, ASTM, and D4236 standards.*



Charm-2

INTRODUCING OUR SELF-EVOLVING MINERAL PIGMENTS  
THE FIRST OF THEIR KIND IN THE WORLD OF WATERCOLOR ART

COLOUR NUMBER	OPACITY DEGREE	LIGHTFASTNESS	SERIES
EM707	<input type="checkbox"/> Opaque <input checked="" type="checkbox"/> Semi-opaque <input type="checkbox"/> Trasparente	+++ Excellent ++ Very Good + Normal LF= Level of Lightfastness	<input checked="" type="checkbox"/> S3 Price Series 3-5

## Peach Fairy



EM707

☑ LF8/++

PV.15/ PB.29/ PV.19

S4



## Landmark



EM708

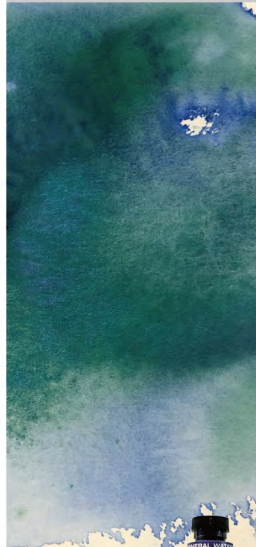
☑ LF7/++

PBK.7/ Ruby Deep

S4



## Poseidon



EM709

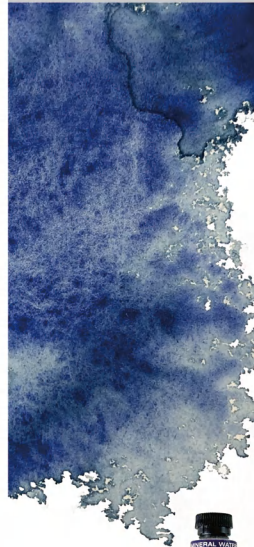
☑ LF8/+++

PG.50/ PB.36/ PB.15

S5



## Blue Enchantress



EM710

☑ LF3/+++

PB.29/ PB.27

S3



## Fall Story



EM711

☑ LF7/++

PG.50/ PY.3/ PO.13

S5



## Lover Tears



EM712

☑ LF4/++

PV.19 Mica/ Glist

S4



# CHARM-3

Self-Evolving  
Mineral  
Watercolors

6 colors Set  
8ml, S1-S5

Since 1971, World Wetlands Day, observed annually on February 2nd, has been dedicated to raising public awareness of the beauty, values and benefits of wetlands. Our colors, always crafted from natural minerals and plants, reflect our profound appreciation for wetlands, the guardians of life on our planet. Each evolving color has been made to represent one of the infinite magical elements of the wetlands. We share them with you, hoping to bring you more awareness of their importance, and inspire you to treasure the wetlands as we do.

To savour the gift of nature that inspires such beautiful art, we must embrace the responsibility to preserve it.



# Charm-3



INTRODUCING OUR SELF-EVOLVING MINERAL PIGMENTS  
THE FIRST OF THEIR KIND IN THE WORLD OF WATERCOLOR ART

COLOUR NUMBER    OPACITY DEGREE    LIGHTFASTNESS    SERIES

EM707

- Opaque
- Semi-opaque
- Transparente

+++ Excellent  
++ Very Good  
+ Normal  
LF= Level of  
Lightfastness

**S2** Price Series  
1-5



## Cattails



EM713

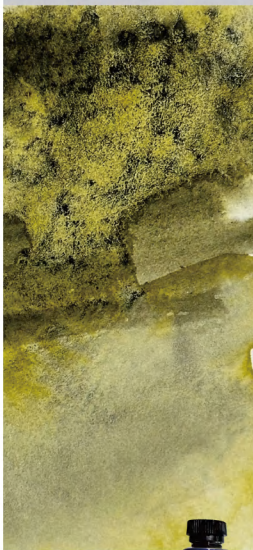
☑ LF7/+++

PBR.29/ PBK.11/  
PY.42/ PB.29

S2



## Yellow Moss



EM714

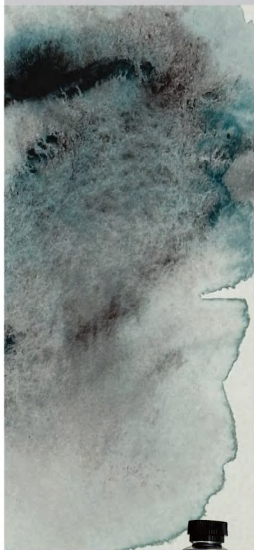
☑ LF7/+++

PBK.11/ PY.1

S1



## Swamp



EM715

☑ LF7/+++

PBR.29/ PB.17

S2



## Maple Samaras



EM716

☑ LF8/+++

PV.15/ PY.3/ PO73

S2



## Wild Iris



EM717

☑ LF8/+++

PV.23/ PV.19/ PB.36

S5



## Iridescent Mallard



EM718

☑ LF7/+++

PBK.11/ PG.7

S2



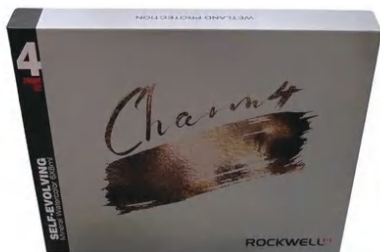
# CHARM-4

Self-Evolving  
Mineral  
Watercolors

6 colors Set  
8ml, S1-S5

Since 1971, World Wetlands Day, celebrated each year on February 2nd, has served as a powerful reminder of the beauty, value, and vital importance of wetlands. Our watercolours, meticulously crafted from natural minerals and plants, are a testament to our deep respect for these life-sustaining ecosystems. Each colour in our collection symbolises a unique, magical element of the wetlands, inviting you to share in our reverence and to raise awareness about their crucial role in our world.

In cherishing the natural beauty that inspires our art, we embrace the responsibility to protect and preserve it for future generations.



# Charming 4



INTRODUCING OUR SELF-EVOLVING MINERAL PIGMENTS  
THE FIRST OF THEIR KIND IN THE WORLD OF WATERCOLOR ART

COLOUR NUMBER    OPACITY DEGREE    LIGHTFASTNESS    SERIES

EM707

- Opaque
- Semi-opaque
- Transparent

+++ Excellent  
++ Very Good  
+ Normal  
LF= Level of  
Lightfastness

**S3** Price Series  
3-5

## Wetlands



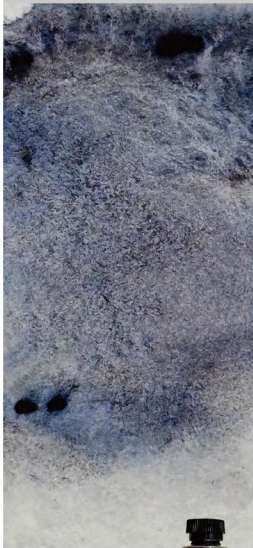
EM719

☑ LF7/+++

PBR.29/ PG.7



## Peat Bogs



EM720

☑ LF7/+++

PBR.29/ PB.29



## Salt-marsh Sparrow



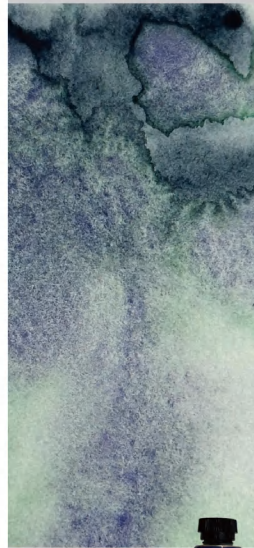
EM721

☑ LF7/+++

PBR.29/PY.3



## Dragonfly



EM722

☑ LF7/+++

PBR.29/ PB.29/ PG.7



## Purple Lichen



EM723

☑ LF7/+++

PBR.29/ PV.15



## Cerulean Warbler



EM724

☑ LF7/+++

PBK.11/ PB.15

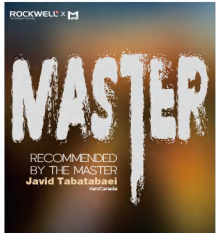


# MASTER'S SECRETS



## Javid Tabatabaei

Carefully selected watercolor  
Set of 12 Color Tubes  
15ml



*Rockwell's vibrant world of watercolor comes to life through the expertise of our esteemed International Ambassadors. Renowned masters of their craft, some of our ambassadors curate personalized collections of their favorite Rockwell watercolor pigments, capturing the essence of their artistic vision. Each carefully selected color reflects the unique style and proficiency of these artists, allowing you to explore the nuances of their creativity on your canvas. Immerse yourself in the palette of possibilities and elevate your watercolor experience with the 'Master's Secrets' exclusive collections.*

*Thanks to Mr. Javid Tabatabaei for the perfect and professional test.*

*Our Motto is to gather the world's leading pigment experts and masters to continue developing the best pigments, we are proud of our work.*



# Javid Tabatabaei

Iran/Canada

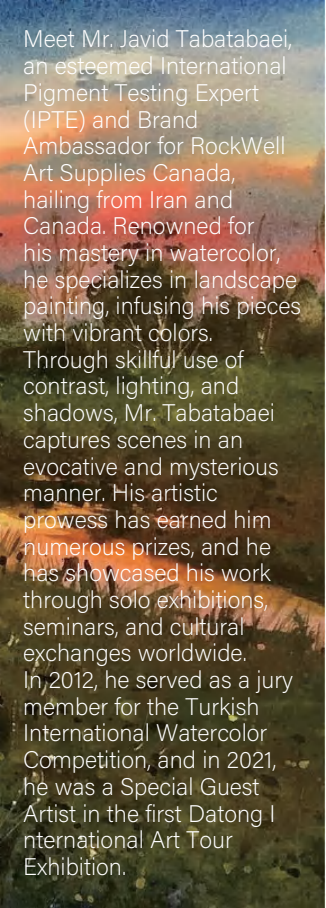
International Pigment Testing Expert (IPTE) for Eureka & RockWell, Canada.

He is a master of watercolor excelling in landscape painting. The colors in his pieces are always vibrant and, along the superb use of contrast, lighting and shadows, he manages to recreate the scenes he paints in an evocative and mysterious key. He won plenty of prizes and He has held solo exhibitions, seminars, and cultural exchanges in many countries. 2012 as a jury member of the Turkish International Watercolor Competition. 2021, Participated in the first Datong International Art Tour Exhibition as a Specially Invited Artist.

*Javid*

More information in  
[www.javidwatercolor.com](http://www.javidwatercolor.com)

Slogan: *Enjoy the romance and beauty brought to us by the different rays of the sunset*



Meet Mr. Javid Tabatabaei, an esteemed International Pigment Testing Expert (IPTE) and Brand Ambassador for RockWell Art Supplies Canada, hailing from Iran and Canada. Renowned for his mastery in watercolor, he specializes in landscape painting, infusing his pieces with vibrant colors. Through skillful use of contrast, lighting, and shadows, Mr. Tabatabaei captures scenes in an evocative and mysterious manner. His artistic prowess has earned him numerous prizes, and he has showcased his work through solo exhibitions, seminars, and cultural exchanges worldwide. In 2012, he served as a jury member for the Turkish International Watercolor Competition, and in 2021, he was a Special Guest Artist in the first Datong International Art Tour Exhibition.

**COLOUR NUMBER**

103

**OPACITY DEGREE**

- Opaque
- Semi-opaque
- Trasparente

**LIGHTFASTNESS**

- +++ Excellent
- ++ Very Good
- + Normal
- LF= Level of Lightfastness

**SERIES**

- S1** Price Series 1-5



Colors selection by  
**JAVID TABATABAEI**  
**Iran/Canada**

*RockWell takes pride in being at the forefront of innovation, and this exclusive set of 12 embodies the extraordinary magic of witnessing colors unfold on your paper as you paint.*

*Light resistance, transparency, tinting strength, color value, particle size, NON-toxicity, etc. and comply with EN71-3, ASTM and D4236 international standards.*



**Primary Yellow**  
103  LF7/+++  
PY.1



**Permanent Deep Yellow**  
104  LF7/+++  
PY.65



**Fire Orange**  
372  LF8/+++  
PO.73



**Chinese Red**  
240  LF7/+++  
PR.4



**Midnight Purple**  
380  LF8/+++  
PV.27



**Ultramarine**  
118  LF8/+++  
PB.29



**Cobalt Turquoise**  
M554  LF8/+++  
PB.36



**Viridian Hue**  
241  LF6/+++  
PG.7



**Olive Green**  
116  LF7/+++  
PG.7/ PY.14/ PY.12



**Burnt Sienna**  
M230  LF8/+++  
PR.101



**Burnt Umber**  
M231  LF8/+++  
PY.1/ PR101/ PBR6



**Payne's Grey**  
123  LF8/+++  
PBK.7/ PB.15

# MASTER'S SECRETS



## Veneta Docheva

Carefully selected watercolor  
Set of 12 Color Tubes  
15ml



*Rockwell's vibrant world of watercolor comes to life through the expertise of our esteemed International Ambassadors. Renowned masters of their craft, some of our ambassadors curate personalized collections of their favorite Rockwell watercolor pigments, capturing the essence of their artistic vision. Each carefully selected color reflects the unique style and proficiency of these artists, allowing you to explore the nuances of their creativity on your canvas. Immerse yourself in the palette of possibilities and elevate your watercolor experience with the 'Master's Secrets' exclusive collections.*

*Thanks to Ms. Veneta Docheva for the perfect and professional test.*

*Our Motto is to gather the world's leading pigment experts and masters to continue developing the best pigments, we are proud of our work.*



# Veneta Docheva

## Bulgaria

International Pigment Testing Expert (IPTS) for Eureka & RockWell, Canada.

Ambassador of the Mondial Art Academia, France. More than 70 group exhibitions and numerous solo exhibitions all around the globe. Exhibitions held in the leading galleries and contemporary art foundations. More than 206 000 followers on social media.

She advocates nature, and most of her works describe the beauty and charm of nature.



Veneta Docheva

More information in  
[www.vdocheva.com](http://www.vdocheva.com)

Slogan: Thanks for the gift of nature

Meet Ms. Veneta Docheva from Bulgaria—a true steward of nature, International Brand Ambassador, and Pigment Testing Expert (IBA & IPTE) for Eureka & RockWell in Canada. Additionally, she proudly serves as an Ambassador of the Mondial Art Academia in France. With a resounding slogan, "Thanks for the gift of NATURE," Ms. Docheva has become a symbol of appreciation for the natural world.

Dedicated to advocating for nature, her works intricately capture the beauty and charm of the natural world. Ms. Veneta Docheva stands as a testament to the profound connection between art and the environment, making her a prominent figure in the global art community.

## COLOUR NUMBER

245

## OPACITY DEGREE

- Opaque  
 Semi-opaque  
 Trasparente

## LIGHTFASTNESS

- +++ Excellent  
 ++ Very Good  
 + Normal  
 LF= Level of Lightfastness

## SERIES

- Price Series  
 1-2



Colors selection by

**VENETA DOCHIEVA**

**Bulgaria**

*RockWell takes pride in being at the forefront of innovation, and this exclusive set of 12 embodies the extraordinary magic of witnessing colors unfold on your paper as you paint.*

*Light resistance, transparency, tinting strength, color value, particle size, NON-toxicity, etc. and comply with EN71-3, ASTM and D4236 international standards.*



Gold Ochre

245  
PY.43

LF8/+++

S2



Permanent Deep Yellow

104  
PY.65

LF7/+++

S1

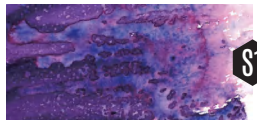


Chinese Red

240  
PR.4

LF7/+++

S2



Royal Purple

EM128  
PB.17/ PG.7

LF7/+++

S1



Alexandria Diamond Purple

EM119  
PB.29/ PR.122/ PB.R6

LF7/+++

S1



Valentine Purple

EM146  
PW.6/ PR.122/ PB.29

LF5/+++

S1



Sky Blue

129  
PB.17

LF6/+++

S1



Obsidian Brown

EM226  
PB.29/ PBR.6/ PY.43

LF7/+++

S2



Permanent Yellow Green

EM112  
PY.12/ PG.7

LF6/+++

S1

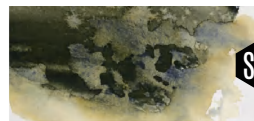


Onat Diamond Yellow

EM131  
PB.29/ PY.65

LF7/+++

S1



Opal Yellow

EM233  
PB.29/ PY.65/ PBR.6

LF7/+++

S2



Payne's Grey

123  
PBK.7/ PB.15

LF8/+++

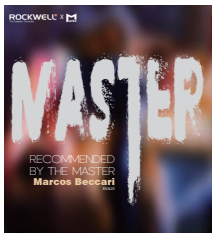
S1

# MASTER'S SECRETS



## Marcos Namba Beccari

Carefully selected watercolor  
Set of 12 Color Tubes  
15ml



*Rockwell's vibrant world of watercolor comes to life through the expertise of our esteemed International Ambassadors. Renowned masters of their craft, some of our ambassadors curate personalized collections of their favorite Rockwell watercolor pigments, capturing the essence of their artistic vision. Each carefully selected color reflects the unique style and proficiency of these artists, allowing you to explore the nuances of their creativity on your canvas. Immerse yourself in the palette of possibilities and elevate your watercolor experience with the 'Master's Secrets' exclusive collections.*

*Thanks to Mr. Marcos Namba Beccari for the perfect and professional test.*

*Our Motto is to gather the world's leading pigment experts and masters to continue developing the best pigments, we are proud of our work.*



# Marcos Namba Beccari

## Brazil

International Cultural Ambassador (ICA) for RockWell, Canada.

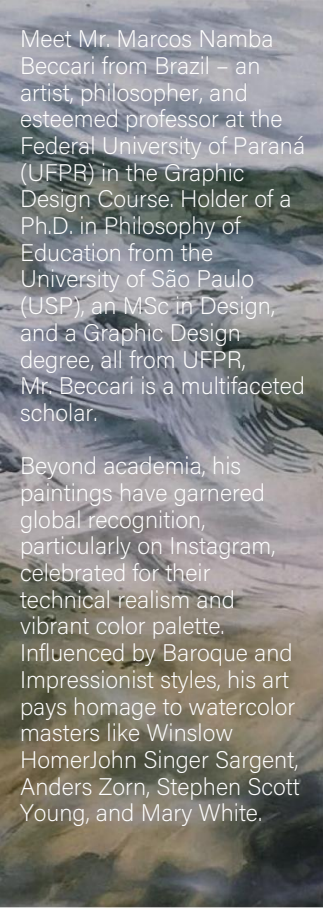
Marcos Beccari is artist, philosopher and professor at the Federal University of Paraná (UFPR), lecturing in the Graphic Design Course, PhD in Philosophy of Education from the University of São Paulo (USP), MSc in Design and graduated in Graphic Design, both from the UFPR. Through Instagram, his paintings gained worldwide notoriety, especially for their technical realism and vibrant use of color. With a Baroque and Impressionist influence, his work makes reference to watercolor masters such as Winslow Homer, John Singer Sargent, Anders Zorn, Stephen Scott Young and Mary White. For attributing fluidity and spontaneity to the painted figures, Marcos Beccari is considered one of the exponents of the renovation of watercolor painting, having a production already prestigious by art societies and specialized magazines in the U.S. and Europe. Marcos Beccari lives in Curitiba, Brazil.



More information in  
[www.marcosbeccari.com](http://www.marcosbeccari.com)

*Slogan: Our doing must determine what we leave undone; in that we do, we leave undone.*





## COLOUR NUMBER

102

## OPACITY DEGREE

- Opaque
- Semi-opaque
- Trasparente

## LIGHTFASTNESS

- +++ Excellent
- ++ Very Good
- + Normal
- LF= Level of Lightfastness

## SERIES

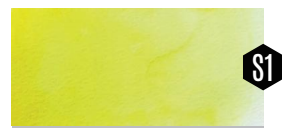
- S1** Price Series 1-2



### Colors selection by **MARCOS BECCARI** **Brazil**

*RockWell takes pride in being at the forefront of innovation, and this exclusive set of 12 embodies the extraordinary magic of witnessing colors unfold on your paper as you paint.*

*Light resistance, transparency, tinting strength, color value, particle size, NON-toxicity, etc. and comply with EN71-3, ASTM and D4236 international standards.*



**Yellow Lemon**  
102  LF6/+++  
PY.3



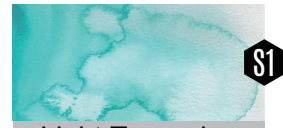
**Permanent Deep Yellow**  
104  LF7/+++  
PY.65



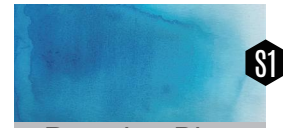
**Gold Ochre**  
245  LF8/+++  
PY.43



**Permanent Yellow Green**  
EM112  LF6/+++  
PY.12/ PG.7



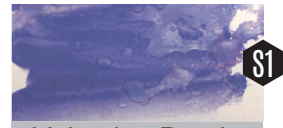
**Light Turquoise**  
M149  LF5/+++  
PB.15/ PG.7/ PW.6



**Prussian Blue**  
M144  LF7/+++  
PB.27



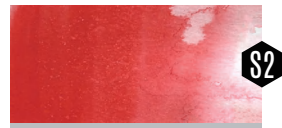
**Ultramarine**  
118  LF8/+++  
PB.29



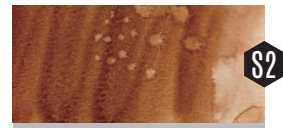
**Valentine Purple**  
EM146  LF5/+++  
PW.6/ PR.122/ PB.29



**Opera Red**  
133  LF6/+++  
FLUORESCENT



**Chinese Red**  
240  LF7/+++  
PR.4



**Burnt Sienna**  
M230  LF8/+++  
PR.101



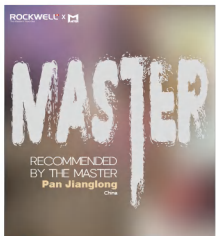
**Payne's Grey**  
123  LF8/+++  
PBK.7/ PB.15

# MASTER'S SECRETS



## Jianglong Pan

Carefully selected watercolor  
Set of 12 Color Tubes  
15ml



*Rockwell's vibrant world of watercolor comes to life through the expertise of our esteemed International Ambassadors. Renowned masters of their craft, some of our ambassadors curate personalized collections of their favorite Rockwell watercolor pigments, capturing the essence of their artistic vision. Each carefully selected color reflects the unique style and proficiency of these artists, allowing you to explore the nuances of their creativity on your canvas. Immerse yourself in the palette of possibilities and elevate your watercolor experience with the 'Master's Secrets' exclusive collections.*

*Thanks to Mr. Jianglong Pan for the perfect and professional test.*

*Our Motto is to gather the world's leading pigment experts and masters to continue developing the best pigments, we are proud of our work.*



# Jianglong Pan

## China

Pan said that the best material for watercolor is water. Watercolor is the control of water and color. Through the expression of a certain degree and form of water and mineral pigments, the pigments present the trace of water, and constantly let this "trace" express an idea. Only at this time will watercolor have power and truly become a work.



潘江龙  
PANJIANGLONG

Slogan: Practice leads to true knowledge. Rockwell is my first choice in watercolor painting.

Meet Mr. Jianglong Pan,  
Artistic Director and  
Chartered Pigment Testing  
Expert for RockWell Art  
Supplies Canada.

Professor of Art College of  
Zhejiang Normal University  
Doctoral tutor

Director of Art Creation  
Department

Watercolor Professional  
Direction Studio Director

Executive Deputy Director  
of Art Creation Steering  
Committee of Jinhua Artists  
Association

Director of Watercolor Art  
Committee of Jinhua Artists  
Association

## COLOUR NUMBER

103

## OPACITY DEGREE

- Opaque  
 Semi-opaque  
 Trasparente

## LIGHTFASTNESS

- +++ Excellent  
++ Very Good  
+ Normal  
LF= Level of  
Lightfastness

## SERIES

- S1** Price Series  
1-4



Colors selection by  
**JIANGLONG PAN**  
China

*RockWell takes pride in being at  
the forefront of innovation, and  
this exclusive set of 12 embodies  
the extraordinary magic of  
witnessing colors unfold on your  
paper as you paint.*

*Light resistance, transparency,  
tinting strength, color value,  
particle size, NON-toxicity, etc.  
and comply with EN71-3, ASTM  
and D4236 international  
standards.*



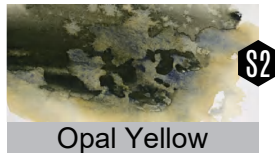
103  LF7/+++  
PY.1



EM146  LF5/+++  
PW.6/ PR.122/ PB.29



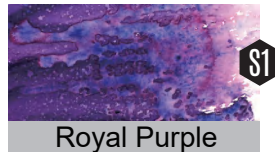
M149  LF5/+++  
PB.15/ PG.7/ PW.6



EM233  LF7/+++  
PB.29/ PY.65/ PBR.6



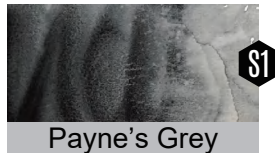
372  LF8/+++  
PO.73



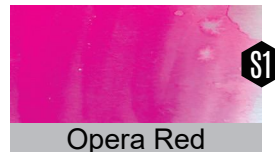
EM128  LF7/+++  
PB.17/ PG.7



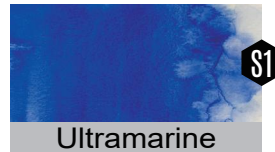
241  LF6/+++  
PG.7



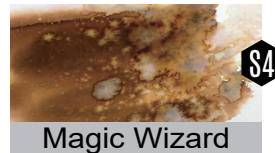
123  LF8/+++  
PBK.7/ PB.15



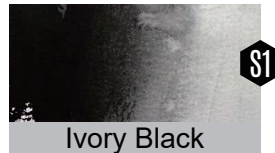
133  LF6/+++  
FLUORESCENT



118  LF8/+++  
PB.29



EM407  LF4/+++  
Plant color PB.29/ PR.3



124  LF8/+++  
PBK.7

# MASTER'S SECRETS



**André Kano**  
Portugal

Carefully selected  
watercolor  
4 boxes of 12 colors  
in total  
15ml



Instagram  
@kanogallery

E-mail  
andremano@gmail.com

Web  
andremano.com

*For many years, I worked as an illustrator in various advertising agencies in Brazil and Portugal. Later, I established my own Graphic Design studio—a pursuit I continue to this day. Consequently, my transition into the watercolor universe was a natural and fluid journey. Watercolor has become, for me, a world brimming with opportunities, enabling me to showcase what I value most in pictorial art: the stimulus to face challenges and overcome them. The recognition of my art has brought me both an element of personal satisfaction as well as an added sense of responsibility, propelling me to evolve in creativity and development. During my workshops and demonstrations, many express curiosity about the colors I employ. Now, I have the honor of presenting this wonderful selection of mine, dedicated especially to you who seek vivacity, quality, and power in your work.*



## COLOUR NUMBER

118

## OPACITY DEGREE

- Opaque
- Semi-opaque
- Trasparente

## LIGHTFASTNESS

- +++ Excellent
- ++ Very Good
- + Normal
- LF= Level of Lightfastness

## SERIES

- Price Series 1-5



Colors selection by

**ANDRÉ KANO**

**Portugal**

*RockWell takes pride in being at the forefront of innovation, and this exclusive set of 12 embodies the extraordinary magic of witnessing colors unfold on your paper as you paint.*

*Light resistance, transparency, tinting strength, color value, particle size, NON-toxicity, etc. and comply with EN71-3, ASTM and D4236 international standards.*

1

2

3

4

Watercolor set 1  
Set of 3 15ml tubes

## LAURINDA

118 Ultramarine  
240 Chinese Red  
245 Gold Ochre



118  LF8/+++  
PB.29



240  LF7/+++  
PR.4

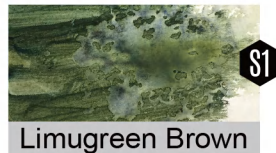


245  LF8/+++  
PY.43

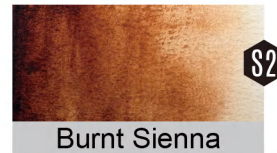
Watercolor set 2  
Set of 3 15ml tubes

## DYING LIGHT

EM143 Limugreen Brown  
M230 Burnt Sienna  
M231 Burnt Umber



EM143  LF7/+++  
PB.29/ PY.43



M230  LF8/+++  
PR.101



M231  LF8/+++  
PY.1/ PR.101/ PBR.6

Watercolor set 3  
Set of 3 15ml tubes

## LISBON, PRETTY GIRL

104 Permanent Deep Yellow  
310 Rose Red  
M553 Cobalt Blue



104  LF7/+++  
PY.65



310  LF8/+++  
PR.122



M553  LF8/+++  
PB.28

Watercolor set 4  
Set of 3 15ml tubes

## BONANZA

116 Olive Green  
EM226 Obsidian Brown  
372 Fire Orange



116  LF7/+++  
PG.7/ PY.14/ PY.12



EM226  LF7/+++  
PB.29/ PBR.6/ PY.43



372  LF8/+++  
PO.73

# ARTIST'S FAVORITES



**Pamela Harnois**  
USA

Carefully selected  
watercolor  
4 boxes of 12 colors  
in total  
15ml



Instagram  
@pamelaharnoisart

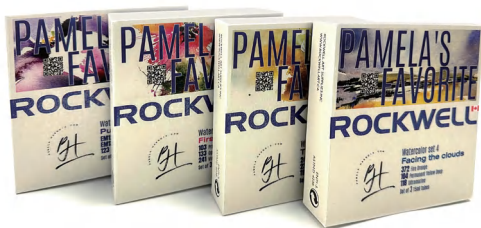
Youtube  
@pamelaharnoisart

Web  
pamelaharnois.com

## **ALL WE NEED IS LOVE**

*In my watercolor pieces, you will find a balance of lightness and looseness, a unique stylistic touch that is unmistakably mine. There is an energy that emanates from each piece, as I let the paints flow freely, blending colors and creating captivating contrasts.*

*Those who view my pieces are immediately drawn to the striking interplay between light and dark, and the juxtaposition of size and scale. Capturing the essence of my subject matter is a skill I have honed through classical training (a BFA in Watercolor from U. Mass.Amherst) and intuitive brushwork.*



## **COLOUR NUMBER**

EM128

## **OPACITY DEGREE**

- Opaque
- Semi-opaque
- Transparente

## **LIGHTFASTNESS**

- +++ Excellent
- ++ Very Good
- + Normal
- LF= Level of Lightfastness

## **SERIES**

-  Price Series 1-3



Colors selection by

**PAMELA HARNOIS**  
**USA**

*RockWell takes pride in being at the forefront of innovation, and this exclusive set of 12 embodies the extraordinary magic of witnessing colors unfold on your paper as you paint.*

*Light resistance, transparency, tinting strength, color value, particle size, NON-toxicity, etc. and comply with EN71-3, ASTM and D4236 international standards.*

1

2

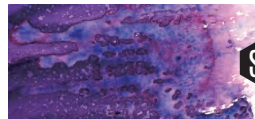
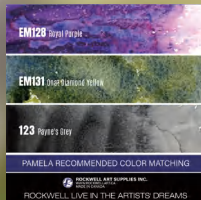
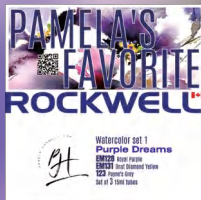
3

4

Watercolor set 1  
Set of 3 15ml tubes

## PURPLE DREAMS

EM128 Royal Purple  
EM131 Onat Diamond Yellow  
123 Payne's Grey



Royal Purple

EM128  LF7/+++  
PB.17/ PG.7



Onat Diamond Yellow

EM131  LF7/+++  
PB.29/ PY.65



Payne's Grey

123  LF8/+++  
PBK.7/ PB.15

Watercolor set 2  
Set of 3 15ml tubes

## FIRST ROSES

103 Primary Yellow  
133 Opera Red  
241 Viridian Hue



Primary Yellow

103  LF7/+++  
PY1



Opera Red

133  LF6/+++  
FLUORESCENT



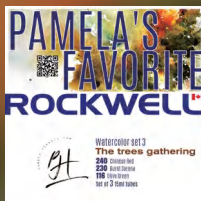
Viridian Hue

241  LF6/+++  
PG7

Watercolor set 3  
Set of 3 15ml tubes

## THE TREES GATHERING

240 Chinese Red  
M230 Burnt Sienna  
116 Olive Green



Chinese Red

240  LF7/+++  
PR4



Burnt Sienna

M230  LF8/+++  
PR101



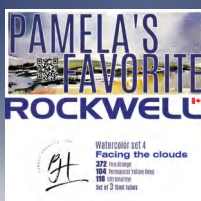
Olive Green

116  LF7/+++  
PG7/ PY14/ PY12

Watercolor set 4  
Set of 3 15ml tubes

## FACING THE CLOUDS

372 Fire Orange  
104 Permanent Yellow Deep  
118 Ultramarine



Fire Orange

372  LF8/+++  
PO73



Permanent Deep Yellow

104  LF7/+++  
PY65



Ultramarine

118  LF8/+++  
PB29

# ARTIST'S FAVORITES



**Angela Fehr**  
USA

Carefully selected  
watercolor  
4 boxes of 12 colors  
in total  
15ml



Instagram  
@angelfehr

Youtube  
@angelfehr

Web  
angelafehr.com

## ALL WE NEED IS LOVE

*As an artist, I have a calling to notice. Seeing the world on a plane that is not merely literal, I want to rip off the callouses that blind me to the beauty and significance in the world. My art is created by water;  
As a watercolorist I marry water with color to create my work, understanding that I am working alongside a medium that must be allowed to flow, to evolve and my responses are as immediate as the flick of a brush. Any original intention must be released if the painting turns in a new direction, and this brings me into a relationship and intimacy with my chosen medium that is dangerously vulnerable and continually new.*



## COLOUR NUMBER

EM131

## OPACITY DEGREE

- Opaque
- Semi-opaque
- Trasparente

## LIGHTFASTNESS

- +++ Excellent
- ++ Very Good
- + Normal
- LF= Level of Lightfastness

## SERIES

- S1** Price Series 1-4



Colors selection by

**ANGELA FEHR**  
**USA**

*RockWell takes pride in being at the forefront of innovation, and this exclusive set of 12 embodies the extraordinary magic of witnessing colors unfold on your paper as you paint.*

*Light resistance, transparency, tinting strength, color value, particle size, NON-toxicity, etc. and comply with EN71-3, ASTM and D4236 international standards.*

1

2

3

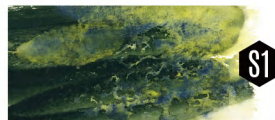
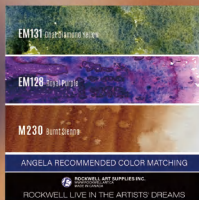
4



Watercolor set 1  
Set of 3 15ml tubes

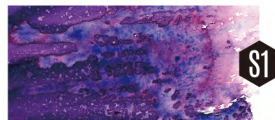
## AUTUMN REVERIE

EM131 Onat Diamond Yellow  
EM128 Royal Purple  
M230 Burnt Sienna



Onat Diamond Yellow

EM131  LF7/+++  
PB.29/ PY.65



Royal Purple

EM128  LF7/+++  
PB.17/ PG.7



Burnt Sienna

M230  LF8/+++  
PR.101

Watercolor set 2  
Set of 3 15ml tubes

## MIDNIGHT FLOWER

D204 Sea Blue Black  
310 Rose Red  
EM232 Lapis Brown



Sea Blue Black

D204  LF8/+++  
PBK.7/ PB.15



Rose Red

310  LF8/+++  
PR.122



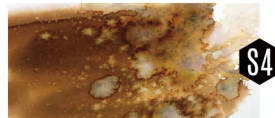
Lapis Brown

EM232  LF7/+++  
PB.29/ PY.65/ PO.13

Watercolor set 3  
Set of 3 15ml tubes

## WHIMSICAL GROVE

EM407 Magic Wizard  
M228 Dark Cyan  
263 Red Gene



Magic Wizard

EM407  LF4/+++  
Plant color PB.29/ PR.3



Dark Cyan

M228  LF6/+++  
PB.17/ PG.7



Red Gene

263  LF7/+++  
PR.3

Watercolor set 4  
Set of 3 15ml tubes

## VISIBLE PEACE

EM414 Morai Witch  
M149 Light Turquoise  
245 Gold Ochre



Morai Witch

EM414  LF7/+++  
Tourmaline PR.146



Light Turquoise

M149  LF5/+++  
PB.15/ PG.7/ PW.6



Gold Ochre

245  LF8/+++  
PY.43

# ARTIST'S FAVORITES



**Daniel Martínez**  
Uruguay

Carefully selected  
watercolor  
4 boxes of 12 colors  
in total  
15ml

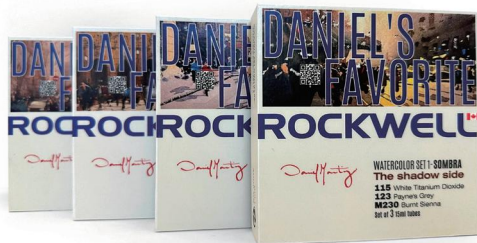


Instagram  
[@danielmartinez.art](https://www.instagram.com/danielmartinez.art)

Web  
[martinez.com.uy](http://martinez.com.uy)

## ALL WE NEED IS LOVE

*Martinez is a very popular Uruguayan artist who specialises in urban architecture themes and sketches. His series of works on the themes of cyclists and businessmen have attracted the attention of many people. His master classes are very popular, his live demonstrations are very contagious, and he is a professional painter who combines teaching with creation. He is an international brand ambassador of RockWell, and we are proud of his achievements in many fields.*



## COLOUR NUMBER

115

## OPACITY DEGREE

- Opaque
- Semi-opaque
- Transparente

## LIGHTFASTNESS

- +++ Excellent
- ++ Very Good
- + Normal
- LF= Level of Lightfastness

## SERIES

- S1** Price Series 1-4



Colors selection by

**DANIEL MARTÍNEZ**

**Uruguay**

*RockWell takes pride in being at the forefront of innovation, and this exclusive set of 12 embodies the extraordinary magic of witnessing colors unfold on your paper as you paint.*

*Light resistance, transparency, tinting strength, color value, particle size, NON-toxicity, etc. and comply with EN71-3, ASTM and D4236 international standards.*

1

2

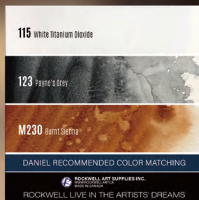
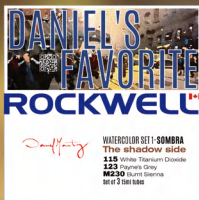
3

4

Watercolor set 1  
Set of 3 15ml tubes

## THE SHADOW SIDE

115 White Titanium Dioxide  
123 Payne's Grey  
M230 Burnt Sienna



White Titanium Dioxide

115  LF8/+++  
PW6

S1

Payne's Grey

123  LF8/+++  
PBK.7/ PB.15

S1

Burnt Sienna

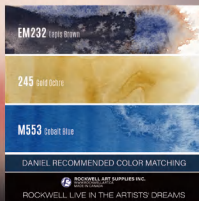
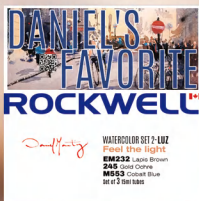
M230  LF8/+++  
PR101

S2

Watercolor set 2  
Set of 3 15ml tubes

## FEEL THE LIGHT

EM232 Lapis Brown  
245 Gold Ochre  
M553 Cobalt Blue



Lapis Brown

EM232  LF7/+++  
PB.29/ PY.65/ PO.13

S2

Gold Ochre

245  LF8/+++  
PY43

S2

Cobalt Blue

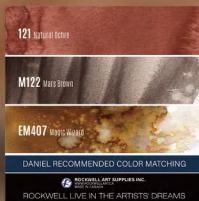
M553  LF8/+++  
PB28

S5

Watercolor set 3  
Set of 3 15ml tubes

## MAGIC TEXTURES

121 Natural Ochre  
M122 Mars Brown  
EM407 Magic Wizard



Natural Ochre

121  LF7/+++  
PR101/ PBR6

S1

Mars Brown

M122  LF8/+++  
PBR6

S1

Magic Wizard

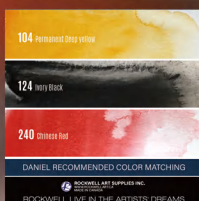
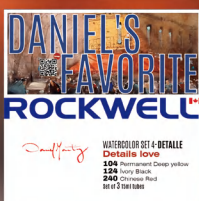
EM407  LF4/+++  
Plant color PB.29/ PR.3

S4

Watercolor set 4  
Set of 3 15ml tubes

## DETAILS LOVE

104 Permanent Deep yellow  
124 Ivory Black  
240 Chinese Red



Permanent Deep Yellow

104  LF7/+++  
PY65

S1

Ivory Black

124  LF7/+++  
PBK7

S1

Chinese Red

240  LF7/+++  
PR4

S2

# THE MASTERS G12-801 COLLECTION

## CAO JUN LAPIS LAZULI

Treasure grade Watercolor  
Tube in a fancy box  
8ml

*Experience the pinnacle of artistic refinement with our exclusive high-end colors, each meticulously crafted through collaborations with Master Watercolor Painters from around the world. These breathtaking hues stand as a testament to unparalleled vibrancy within our entire collection, bringing a level of brilliance that is truly extraordinary.*



## CAOJUN LAPIS LAZULI MINERAL SERIES 8

Now, RockWell will select 12 outstanding masters from around the world and will introduce 12 gem-quality natural mineral watercolor pigments named after the masters. I am proud that, the comprehensive evaluation of judges, the collector's version of "CAOJUN LAPIS LAZULI" was born! I am really very excited, as this hand-finished gem-quality lapis lazuli will be promoted and sold in 17 countries and regions in Europe, America and Asia. It is the best gift for artists.

COLOUR NUMBER    OPACITY DEGREE    LIGHTFASTNESS    SERIES

801

- Opaque
- Semi-opaque
- Trasparente

+++ Excellent  
++ Very Good  
+ Normal  
LF= Level of Lightfastness

 Price Series 8



**CREATE TRADITION TODAY**

**CAO JUN  
USA**

**RORKWELL'S LIFETIME LICENSED PIGMENT TESTING EXPERT**



**THE MASTERS G12-801**

**CAO JUN LAPIS LAZULI**



**GRANDMASTER 12**

# THE MASTERS G12-802 COLLECTION

## ENDRE TOURMALINE

Treasure grade  
Watercolor  
Tube in a fancy box  
8ml

*Experience the pinnacle of artistic refinement with our exclusive high-end colors, each meticulously crafted through collaborations with Master Watercolor Painters from around the world. These breathtaking hues stand as a testament to unparalleled vibrancy within our entire collection, bringing a level of brilliance that is truly extraordinary.*



## ENDRE TOURMALINE MINERAL SERIES 3

Master of the G12 Group. Endre is famous in Black colors, appreciated the sourcing of natural ingredients, and the handmade Tourmaline color of RockWell

COLOUR NUMBER	OPACITY DEGREE	LIGHTFASTNESS	SERIES
---------------	----------------	---------------	--------

802

Opaque  
 Semi-opaque  
 Trasparente

+++ Excellent  
 ++ Very Good  
 + Normal  
 LF= Level of Lightfastness

Price Series 3



A close-up portrait of Endre Penovác, a man with long, thinning grey hair and a beard, looking down. The background is a soft, out-of-focus light color.

# HEART OF CHINESE PAINTING

ENDRE PENOVÁC  
SERBIA

RORKWELL'S LIFETIME LICENSED PIGMENT TESTING EXPERT

A close-up photograph of a black tourmaline crystal. The crystal has a complex, layered structure with sharp, angular facets. A person's finger is visible on the right side, holding the crystal.

# THE MASTERS G12-802

ENDRE TOURMALINE



GRANDMASTER 12

# THE MASTERS G12-800 COLLECTION

## CINDY OCEAN GREEN MALACHITE

Treasure grade  
Watercolor  
Tube in a fancy box  
8ml

*Experience the pinnacle of artistic refinement with our exclusive high-end colors, each meticulously crafted through collaborations with Master Watercolor Painters from around the world. These breathtaking hues stand as a testament to unparalleled vibrancy within our entire collection, bringing a level of brilliance that is truly extraordinary.*



### Cindy Lane

An Australia artist. Multi-disciplinary award-winning artist across many media. Paintings held in Government, corporate and private collections throughout the world. Work is licensed by institutions and companies worldwide. Employed by Government and Educational institutions to teach unique techniques. Social media following of 275K who thank Cindy for art inspiration and advice. RockWell Art Supplies Inc. - Canada is proud to appoint Master Cindy Lane as Interior Pigment Training Expert.

## CINDY OCEAN GREEN MALACHITE MINERAL SERIES 5

Cindy is famous in ocean colors, Appreciated the sourcing of natural ingredients, and RockWell's high-tech research and development of malachite color. She is the defender of the ocean, and she has done a lot of charity activities to protect the ocean and nature.



COLOUR NUMBER	OPACITY DEGREE	LIGHTFASTNESS	SERIES
800	<input type="checkbox"/> Opaque <input checked="" type="checkbox"/> Semi-opaque <input type="checkbox"/> Trasparente	+++ Excellent ++ Very Good + Normal LF= Level of Lightfastness	<input checked="" type="checkbox"/> S1 Price Series 5





# GREEN OCEAN HOME

CINDY LANE  
AUSTRALIA

RORRWELL'S LIFETIME LICENSED PIGMENT TESTING EXPERT



# THE MASTERS G12-800

CINDY OCEAN GREEN MALACHITE



GRANDMASTER 12

# THE MASTERS G12-808 COLLECTION

## CHINA RED MIRROR CINNABAR

Treasure grade  
Watercolor  
Tube in a fancy box  
8ml

*Experience the pinnacle of artistic refinement with our exclusive high-end colors, each meticulously crafted through collaborations with Master Watercolor Painters from around the world. These breathtaking hues stand as a testament to unparalleled vibrancy within our entire collection, bringing a level of brilliance that is truly extraordinary.*



## CHINA RED MIRROR CINNABAR MINERAL SERIES 9

Is the fourth gem mineral pigment of the G12 series, other eight mineral pigments to follow soon, and will be called after well-known international masters, to complete the 12 gem-quality natural mineral watercolor pigment set.

The best Cinnabar minerals are found in China, Rockwell art.ca sourced the finest quality to produce the China Red Mirror Cinnabar, by the Master Cui Jingzhe, the most known and promising Master of Red color.

COLOUR NUMBER    OPACITY DEGREE    LIGHTFASTNESS    SERIES

808

- Opaque
- Semi-opaque
- Trasparente

+++ Excellent  
++ Very good  
+ Normal  
LF= Level of  
Lightfastness

S1 Price Series



A portrait of a man with glasses and a dark blue patterned jacket, looking slightly to the right. The background is black.

**CLASSICS SPREAD FOREVER**

**JINGZHE CUI  
CHINA**

**RORKWELL'S LIFETIME LICENSED PIGMENT TESTING EXPERT**

A close-up image of numerous small, irregular, bright red, crystalline particles of China Red Mirror Cinnabar pigment, filling the entire frame.

**THE MASTERS G12-808**

**CHINA RED MIRROR CINNABAR**



**GENERAL 12**

# THE BLUEBERRY COLLECTION

Fruit Series  
Watercolors

Set of 3 Color Tubes  
8ml

*Introducing the world's first watercolor paint made from blueberries! This innovative creation brings forth the deep and charming hues of blueberries, adding a whole new dimension to artistic expression. Imagine the rich, vibrant shades of blue that can be achieved, reminiscent of the natural beauty found in blueberry fields.*



Unearth your wilderness.  
**Blueberry Natural Pigment Watercolor Set**  
Original watercolor series 3 x 8ml



# blueberry 1



THE WORLD'S FIRST WATERCOLOR PAINT DEVELOPED FROM BLUEBERRIES IS HERE!!! YOUR LOVER IS NOT JUST LAVENDER, DEEP AND CHARMING BLUEBERRY HAS A DATE!

COLOUR NUMBER    OPACITY DEGREE    LIGHTFASTNESS    SERIES

EM707

- Opaque
- Semi-opaque
- Transparente

+++ Excellent  
++ Very Good  
+ Normal  
LF= Level of  
Lightfastness

**S3** Price Series  
1-3

## Star Berries



**B2301**

LF6/+++

PB.15 / PY.3 /  
PR.4 / PW.6

**S1**



## Harvest Oracle



**B2302**

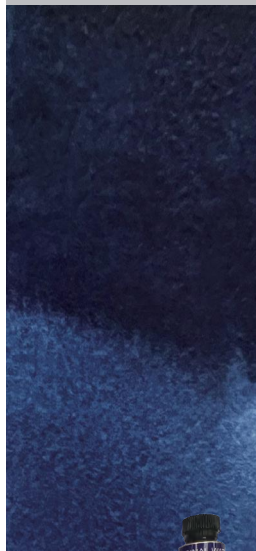
LF7/+++

PV.15 / PB.29 /  
PBK.7

**S3**



## Earth Magic



**B2303**

LF8/+++

PB.15 / PY.3

**S2**



# BLUEBERRY FOLKTALES

For over 13,000 years, the ancient blueberry has graced the Earth, a sweet gift to all kinfolk.

## B 2301 Star Berries

Native American legend has it that during a time of starvation, the Great Spirit sent these "star berries" down from the heavens to relieve the hunger of his children.

## B 2302 Harvest Oracle

During Ireland's Lughnasadh festival, blueberries are seen as an oracle, their harvest foretelling prosperity for the season.

## B 2303 Earth Magic

In ancient witchcraft, crushing the fresh berries yielded pigments for drawing protective sigils on talismans, paper, and skin.



# AROMA COFFEE SET

Mellow Series  
Watercolors

Set of 3 Color Tubes  
8ml

*Savor the artistry of painting as one relishes the morning coffee, courtesy of the exquisite Aroma Coffee Set! This collection comprises three 8 ml tubes, each presenting a distinct coffee-inspired hue meticulously crafted from real coffee by Rockwell Art Supplies in collaboration with the esteemed founder and president of IWS, the renowned Artist Atanur Dogan.*



ORIGINAL WATERCOLOR SERIES 3 X 8ML



WHEN YOU OPEN THE LID AND SMELL THE COFFEE,  
LET YOU START A ROMANTIC CREATION WITH "AROMA COFFEE"...

COLOUR NUMBER	OPACITY DEGREE	LIGHTFASTNESS	SERIES
---------------	----------------	---------------	--------

CO2303

- Opaque
- Semi-opaque
- Trasparente

+++ Excellent  
++ Very Good  
+ Normal  
LF= Level of  
Lightfastness

 Price Series  
2

## Mocha



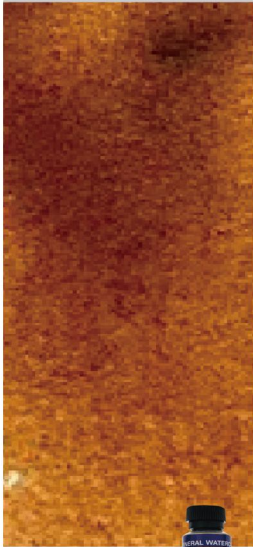
CO2305

☑ LF8/+++

PBK.7/ PY.65/  
PR.3/ PW.6



## Americano



CO2303

☐ LF8/+++

PBK.7/ PY.42



## Espresso



CO2306

☐ LF8/+++

PBK.7/ PY.65/ PR.3



THE FRAGRANCE OF COFFEE IS ALSO LIKE  
THE BREATH OF LIFE

# NATIONAL BEAUTY

Mineral  
Watercolor

Set of 6 Color Tubes  
8ml, S5

*Our Natural Beauty Collection features 6 beautiful hues inspired by nature, from the serenity of a white pearl and natural clay-ochre tones to the awe-inspiring malachite stone!*



COLLECTOR'S  
ITEM

COMMEMORATIVE GIFT BOX FOR  
THE 50TH ANNIVERSARY OF  
THE ESTABLISHMENT OF  
DIPLOMATIC RELATIONS BETWEEN  
CHINA AND CANADA



THANKS FOR THE GIFT OF NATURE

COLOUR NUMBER	OPACITY DEGREE	LIGHTFASTNESS	SERIES
M582C	<input type="checkbox"/> Opaque <input checked="" type="checkbox"/> Semi-opaque <input type="checkbox"/> Trasparente	+++ Excellent ++ Very Good + Normal LF= Level of Lightfastness	 Price Series 5



Natural White Pearl



M582C

☑ LF8/+++

Natural Mineral Pigment

\$5



Gamboge



M583C

☑ LF8/+++

Natural Mineral Pigment

\$5



Cochineal



M584C

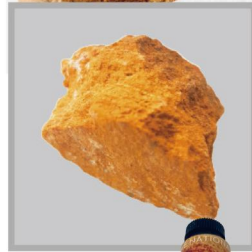
☑ LF7/+++

Natural Mineral Pigment

\$5



Ochre



M585C

☑ LF8/+++

Natural Mineral Pigment

\$5



Malachite



M586C

☑ LF8/+++

Natural Mineral Pigment

\$5



Buddhist Green



M587C

☑ LF3/+++

Natural Mineral Pigment

\$5



# THE 3D OILAC COLLECTION

Mineral  
Water base mixable  
oil color

Set of 12 Color Tubes  
40ml, S1-S4

*Explore the perfect synergy of oil, acrylic, and watercolor in our paint. Achieve an oil finish with thick application, acrylic-like fast drying, and watercolor magic when diluted. Crafted with natural mineral pigments, our water-soluble non-toxic formula ensures a high intensity vivid matte finish.*

**OILAC**



WATER  
MIXABLE  
OIL



Explore the perfect synergy of oil, acrylic, and watercolor in our paint. Achieve an oil finish with thick application, acrylic-like fast drying, and watercolor magic when diluted. Crafted with natural mineral pigments, our water-soluble non-toxic formula ensures a high intensity vivid matte finish.

COLOUR NUMBER	OPACITY DEGREE	LIGHTFASTNESS	SERIES
388	<input type="checkbox"/> Opaque <input checked="" type="checkbox"/> Semi-opaque <input type="checkbox"/> Trasparente	+++ Excellent ++ Very Good + Normal LF= Level of Lightfastness	<input checked="" type="checkbox"/> S1 Price Series 1-4

# ROCKWELL OILAC

SET OF 12 COLOR TUBES  
MINERAL ENVIRONMENTAL  
3D PIGMENT (MHP)

OILAC's water-soluble oil paint products are particularly suitable for:

- Oil painters who are allergic to solvents such as petroleum solvent oil (mineral oil) or turpentine, or simply want to avoid contact with these solvents.
- Students and teachers in school are prohibited from using oil paints on campus due to the use of solvents.
- Painters who paint in public art studios may experience the accumulation of solvent evaporation, which can lead to harmful concentrations of solvent vapor and create unpleasant indoor odors.
- A painter who paints in a small home environment and wishes to reduce the flavor of oil painting.
- Travel. All Artisan products (pigments and media) can be shipped by air (subject to airline agreements).



S1

Albedo White

388  LF8/+++  
PW.6



S1

Primary Yellow

301  LF8/+++  
PY.1



S1

Flesh Colored

302  LF8/+++  
PR.22/ PY.12/ PW.6



S1

Orange

357  LF8/+++  
PO.13



S2

Bright Red

381  LF8/+++  
PR.3



S4

Rose Red

332  LF8/+++  
PR.101



S4

Romantic Purple

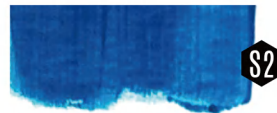
358  LF8/+++  
PV.23



S1

Viridian Hue

322  LF8/+++  
PG.7



S2

Light Turquoise

306  LF8/+++  
PB.17/ PG.7



S2

Ultramarine

382  LF8/+++  
PB.29



S1

Mars Brown

312  LF8/+++  
PBR.6



S1

Black

309  LF8/+++  
PBK.7

**ROCKWELL** 



**ROCKWELL ART SUPPLIES INC.**

[www.rockwellart.ca](http://www.rockwellart.ca)  
[info@rockwellart.ca](mailto:info@rockwellart.ca)  
made in canada